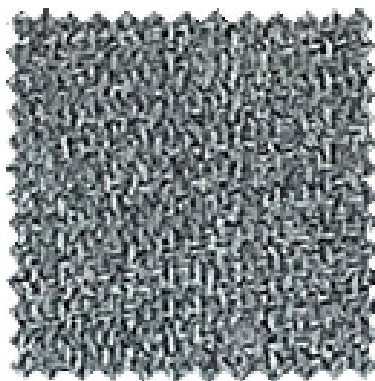
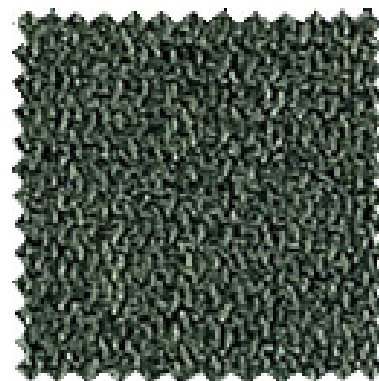


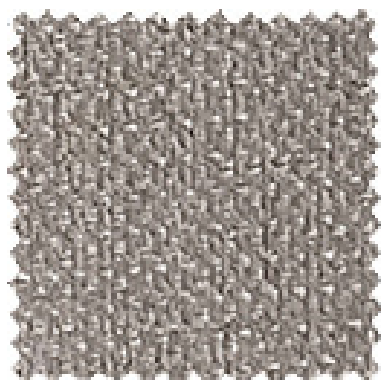
Poliestere plus  
bordeaux



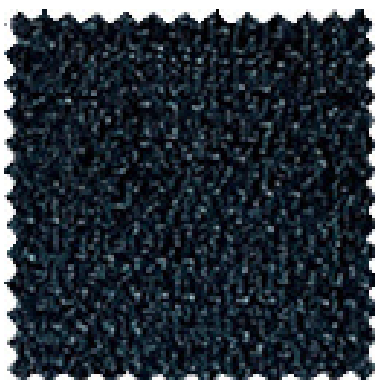
Poliestere plus  
azzurro



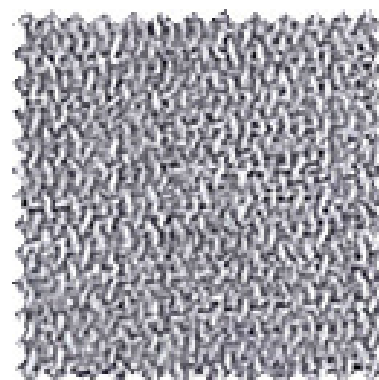
Poliestere plus  
verde



Poliestere plus  
sabbia



Poliestere plus  
blu



Poliestere plus  
grigio

CARATTERISTICHE TECNICHE  
TECHNICAL FEATURES

**NOME ARTICOLO**  
PRODUCT NAME

**COMPOSIZIONE TESSUTO** 100% PL  
FABRIC COMPOSITION

**PROPRIETÀ** IDROREPELENTE  
PROPERTY WATER-REPELLENT

**ALTEZZA** 140 CM  
HEIGHT

**PESO** 220 ± 5% GR/MQ  
WEIGHT

**MARTINDALE (ISO 12947-1)** 30.000 GIRI  
ABRASION RESISTANCE (ISO 12947-1) (MARTINDALE) 30.000 GIRI

**RESISTENZA AL PILLING (UNI EN ISO 12945-2):** 4  
PILLING RESISTANCE (UNI EN ISO 12945-2)

**SOLIDITÀ DEL COLORE ALLA LUCE (UNI EN ISO 105-B02):** 3/4 - 5  
FASTNESS TO LIGHT (UNI EN ISO 105-B02)

**SOLIDITÀ COLORE ALLO SFREGAMENTO (UNI EN ISO 105-X12)** A SECCO : 3/4 - 4  
FASTNESS TO RUBBING (UNI EN ISO 105-X12) DRY  
A UMIDO : 3/4 - 4  
WET

**INDICAZIONI LAVAGGIO**  
MAINTENANCE SYMBOLS

